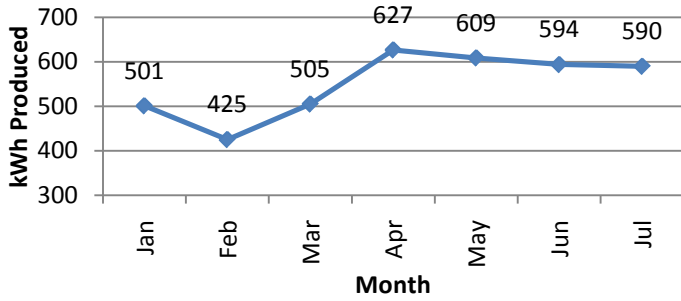


# 2010 Solar & Wind Turbine Data

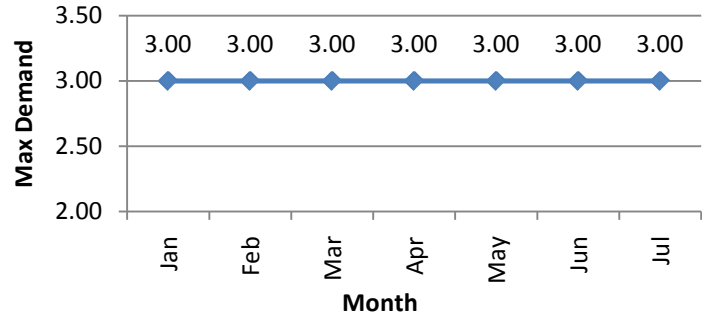
## 3.7 kW Solar Located near Rocky Ford, Colorado

Solar capacity equals approximately 2701 kilowatt hours per month

Kilowatts Generated by Month for 2010



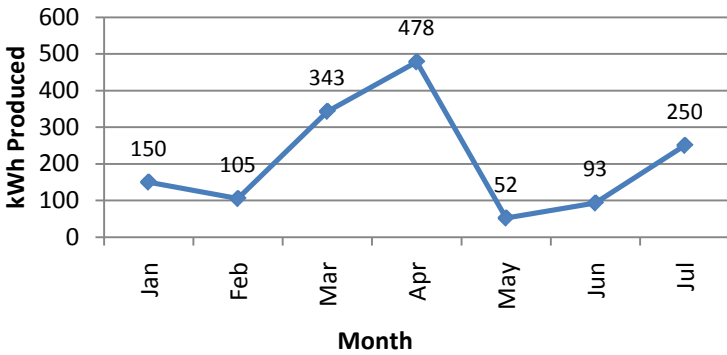
Max Demand Generated by Month for 2010



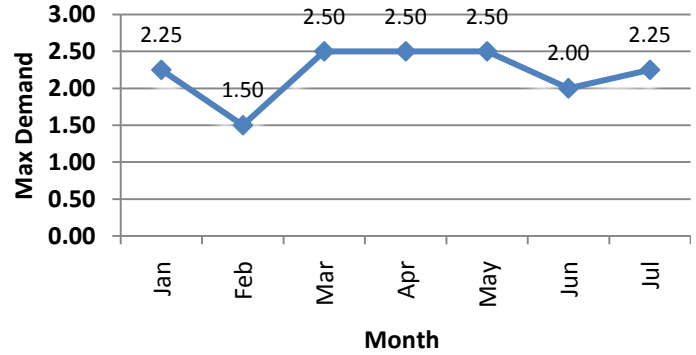
## 1.9 kW Wind Turbine Located near Springfield, Colorado

Turbine Capacity equals approximately 1387 kilowatt hours per month

Kilowatts Generated by Month for 2010



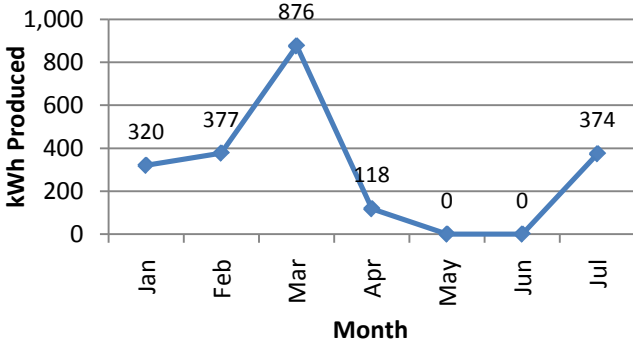
Max Demand Generated by Month for 2010



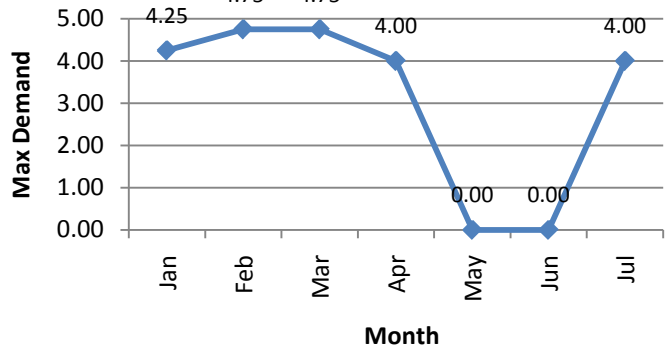
## 5 kW Wind Turbine Located near Walsh, Colorado

Turbine Capacity equals approximately 3650 kilowatt hours per month

Kilowatts Generated by Month for 2010



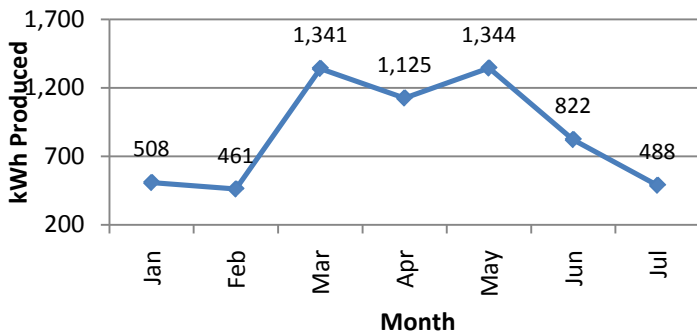
Max Demand Generated by Month for 2010



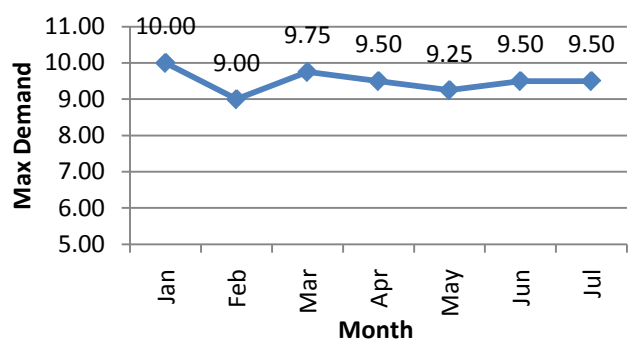
## 10 kW Wind Turbine Located near Haswell, Colorado

Turbine Capacity equals approximately 7300 kilowatt hours per month

Kilowatts Generated by Month for 2010



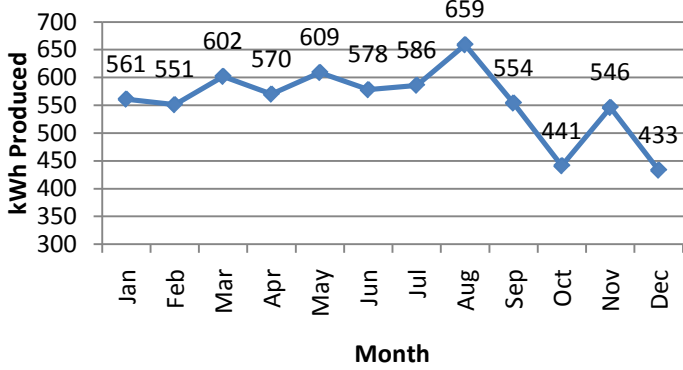
Max Demand Generated by Month for 2010



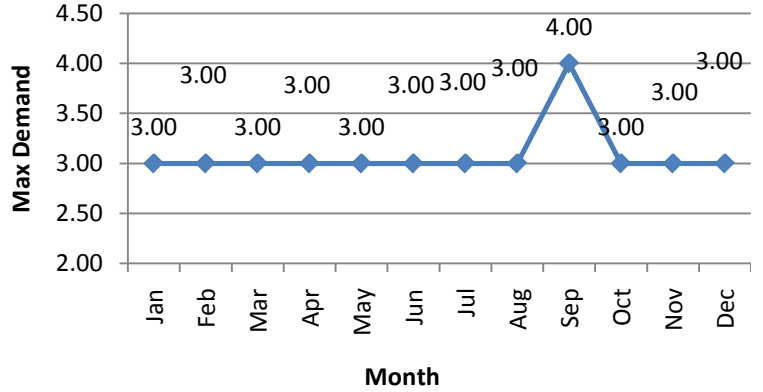
# 2009 Solar & Wind Turbine Data

**3.7 kW Solar Located near Rocky Ford, Colorado**  
**Solar capacity equals approximately 2701 kilowatt hours per month**

**Kilowatts Generated by Month for 2009**

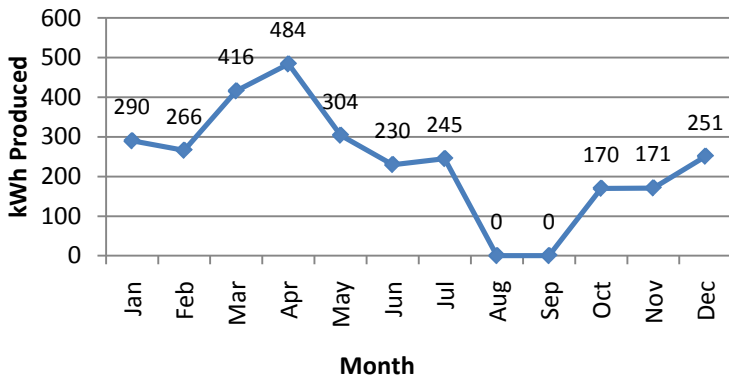


**Max Demand Generated by Month for 2009**

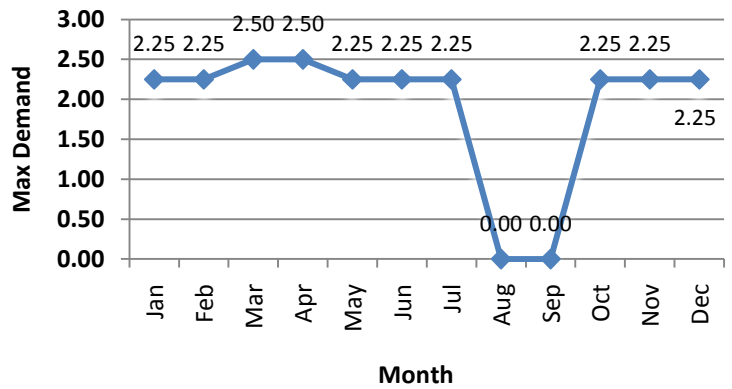


**1.9 kW Wind Turbine Located near Springfield, Colorado**  
**Turbine Capacity equals approximately 1387 kilowatt hours per month**

**Kilowatts Generated by Month for 2009**

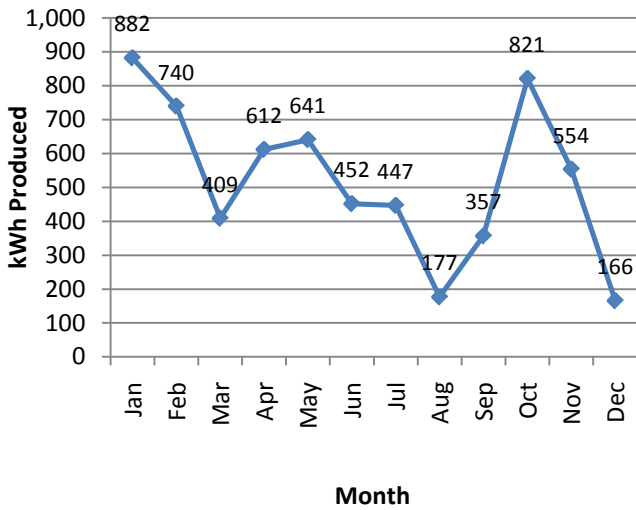


**Max Demand Generated by Month for 2009**

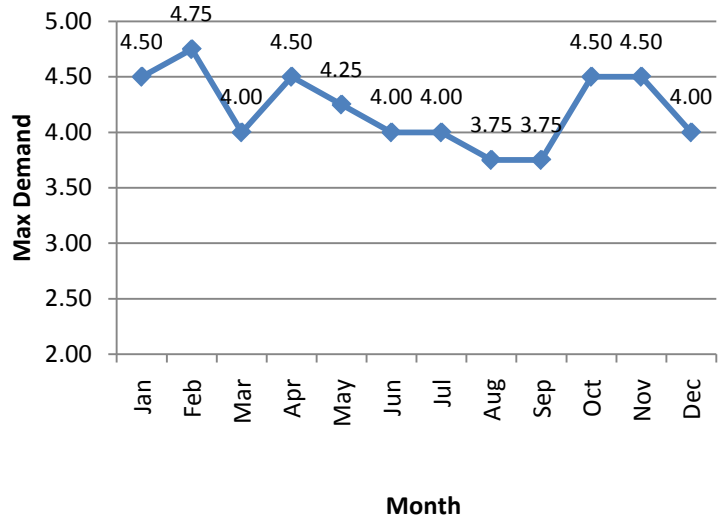


**5 kW Wind Turbine Located near Walsh, Colorado**  
**Turbine Capacity equals approximately 3650 kilowatt hours per month**

**Kilowatts Generated by Month for 2009**

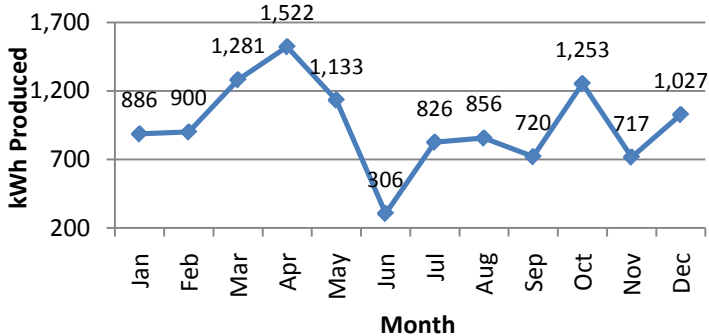


**Max Demand Generated by Month for 2009**

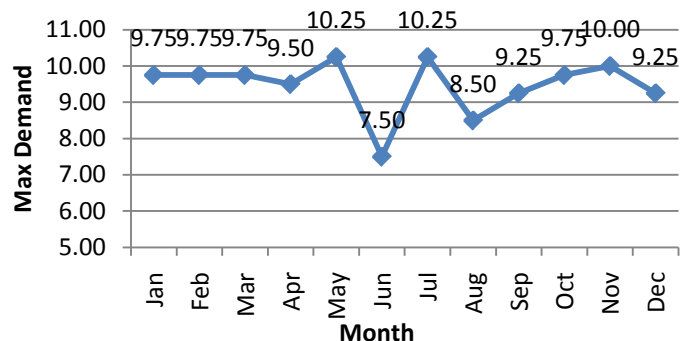


**10 kW Wind Turbine Located near Haswell, Colorado**  
**Turbine Capacity equals approximately 7300 kilowatt hours per month**

**Kilowatts Generated by Month for 2009**



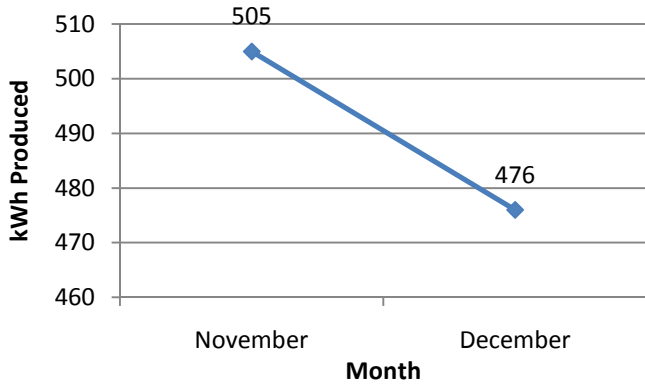
**Max Demand Generated by Month for 2009**



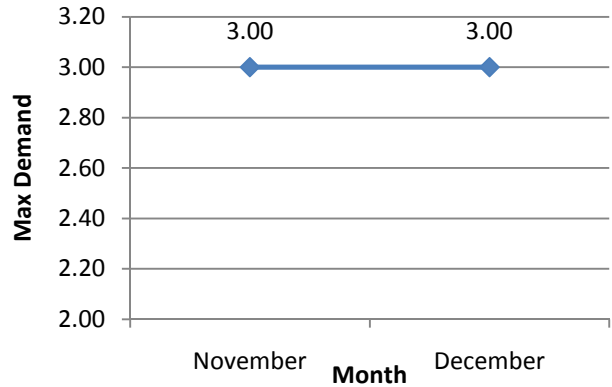
# 2008 Solar & Wind Turbine Data

## 3.7 kW Solar Located near Rocky Ford, Colorado Solar capacity equals approximately 2701 kilowatt hours per month

Kilowatts Generated by Month for 2008

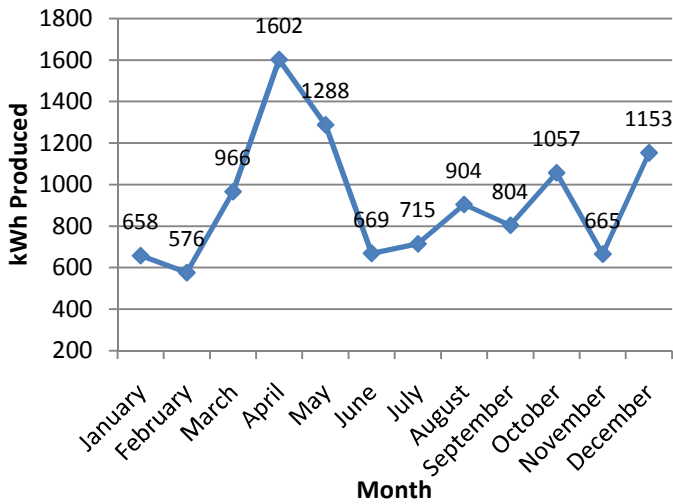


Max Demand Generated by Month for 2008

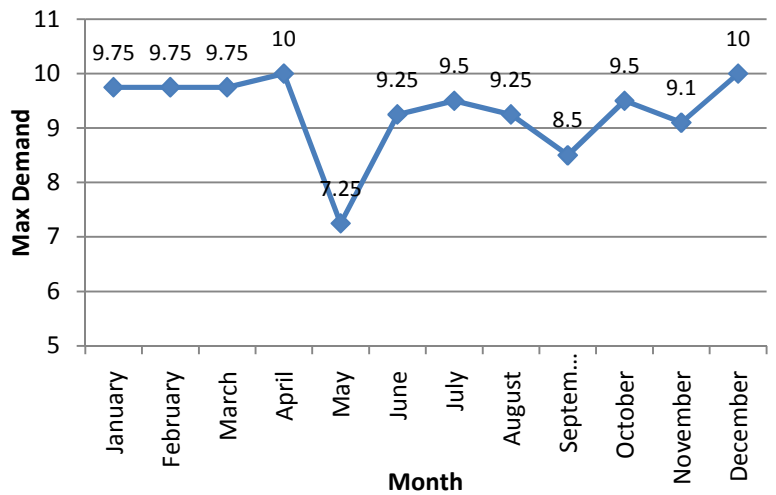


## 10 kW Wind Turbine Located near Haswell, Colorado Turbine Capacity equals approximately 7300 kilowatt hours per month

Kilowatts Generated by Month for 2008



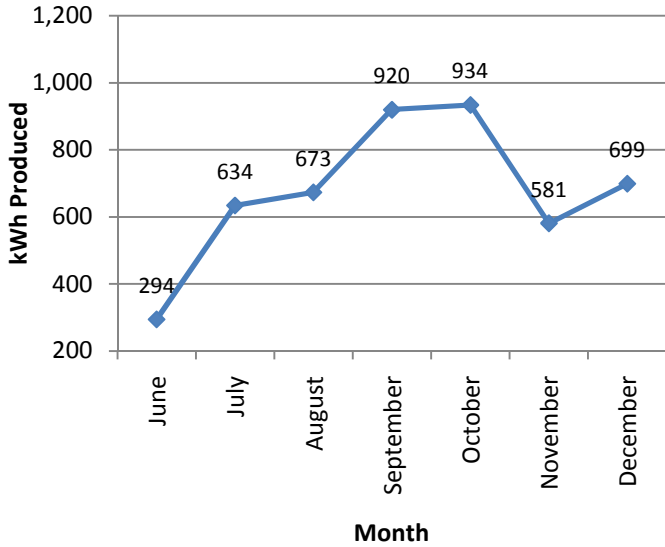
Max Demand Generated by Month for 2008



# 2007 Wind Turbine Data

**10 kW Wind Turbine Located near Haswell, Colorado**  
**Turbine Capacity equals approximately 7300 kilowatt hours per month**

### Kilowatts Generated by Month for 2007



### Max Demand Generated by Month for 2007

